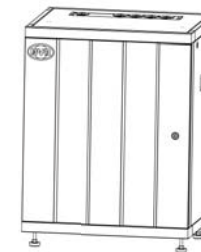
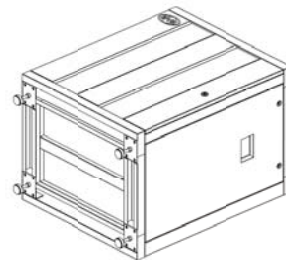
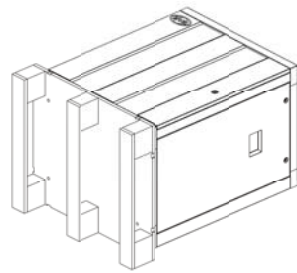
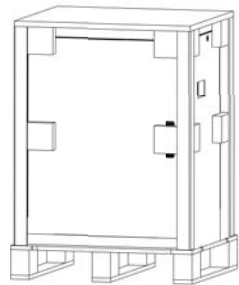
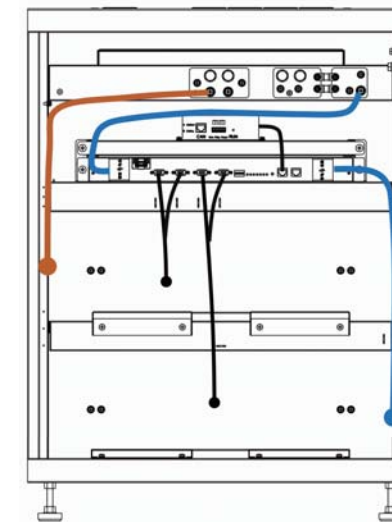


1. Cut the packing belt.    2. Remove the carton    3. Remove the paper angle bead and sponge, put out the accessory in the cabinet    4. Put it down, remove the pallet    5. Install the anchor bolts    6. Flatten the cabinet



7. Open the door

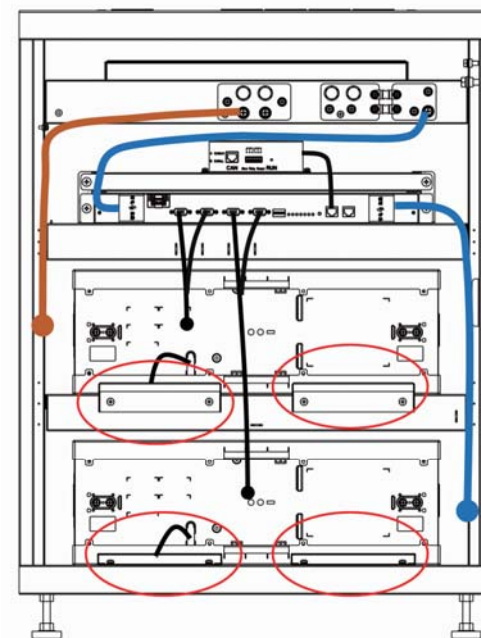
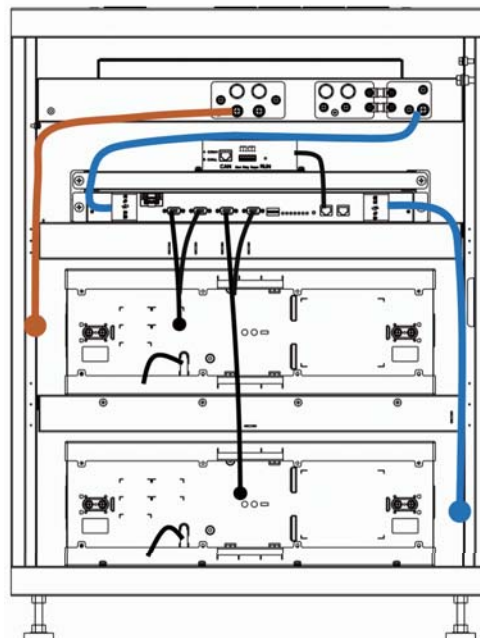
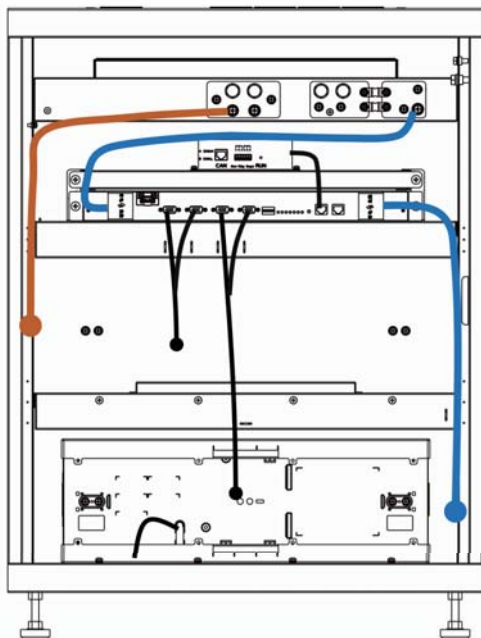
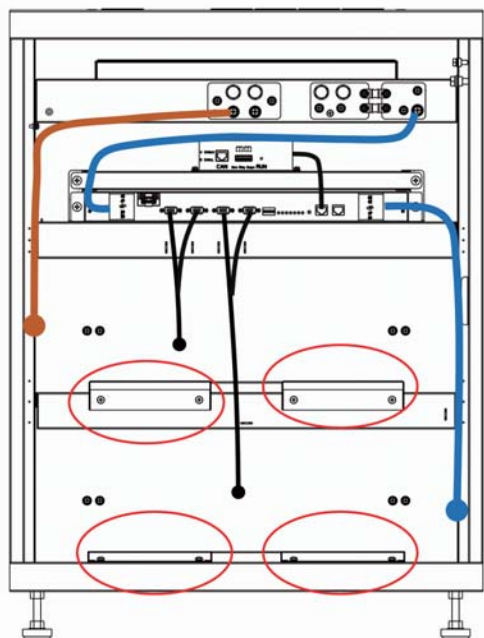


8. Remove the apron.

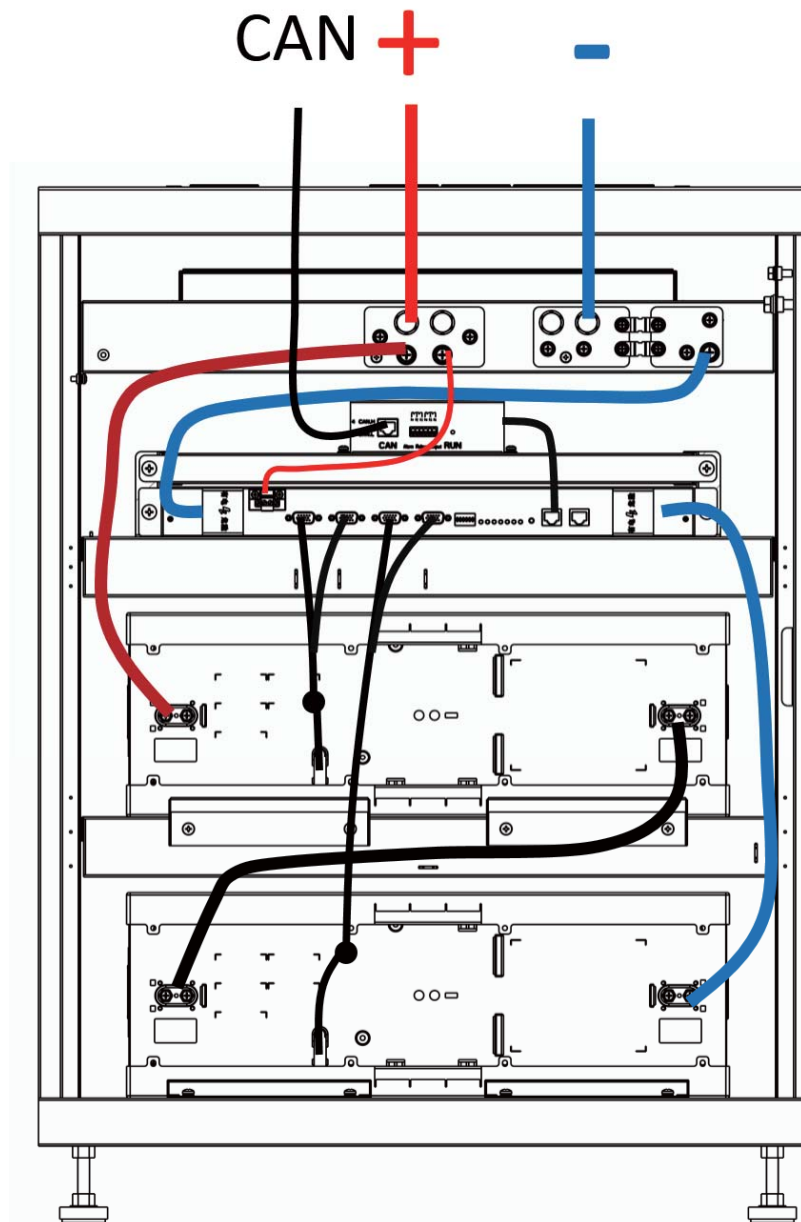
9. Install the first battery.

10. Install the second battery.

11. Install the apron.



16. Connect B-BOX Pro12.8 with the inverter.



12. Connect the sampling cable.

13. Connect the B+ & B- cable.

14. Connect the power cable between two battery Modules.

15. Connect the power cable from the DC bus to B+ of BMS.

